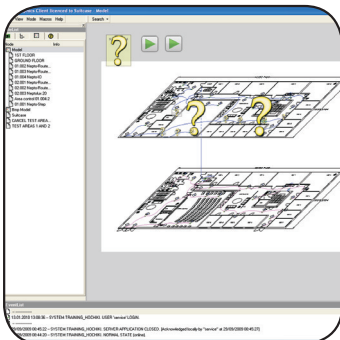


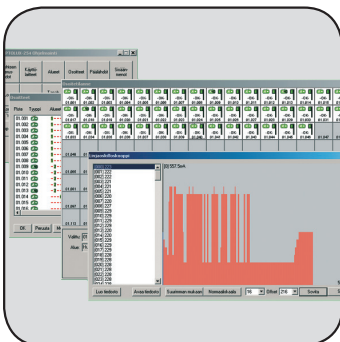
## SOFTWARE



### EL-GRAPH

is an alarm graphics package which allows the end-user to visually check on the status of the complete FIREscape system, down to individual point status.

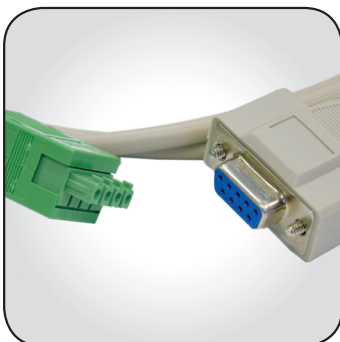
- ▶ Fully integrated graphics package
- ▶ Individual point monitoring
- ▶ Reports point status information
- ▶ Point interrogation and control



### EL-IMP

is a configuration and programming software tool for use with the EL-2 emergency lighting control panel. The software is used to configure light levels, set up lighting areas and create input and output parameters during set-up and commissioning.

- ▶ Allows configuration of luminaires
- ▶ Allows configuration of input/output devices
- ▶ Assists in fault finding
- ▶ Allows uploading and downloading of data
- ▶ Assists in report generation and retrieval



### EL-CAB

is a connection cable for use between the EL-2 Emergency Light Control Panel and a PC/laptop.



### EL-USB

adaptor for use in conjunction with the EL-CAB for connection to PCs/laptops that don't feature a Serial Port.